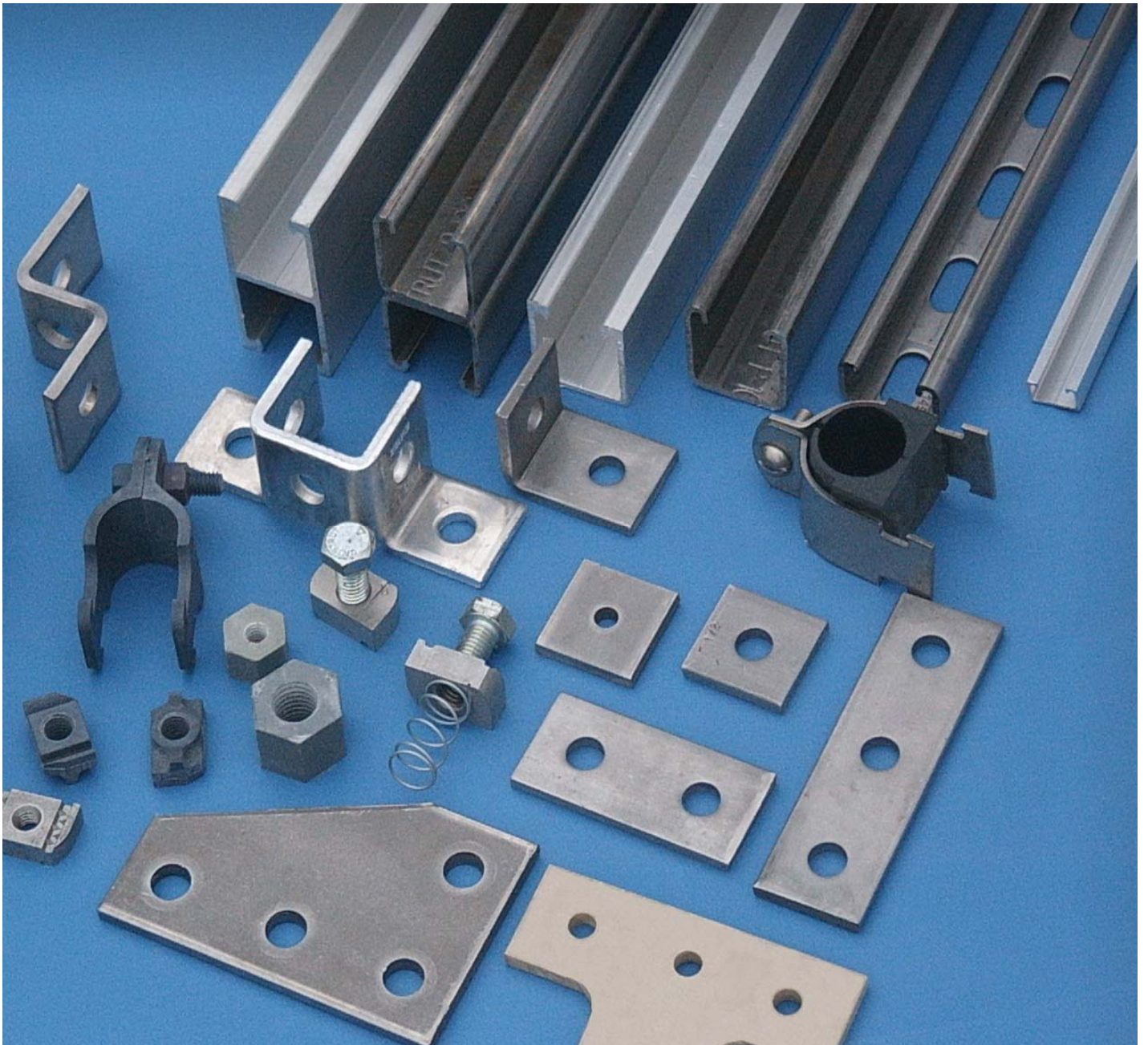


Strut Services Group, Inc.

Stainless Steel
Aluminum
Fiberglass



Channel • Fittings • Accessories

Channel Selection Chart



Channel	Width	Height	Stainless Steel Ga	Aluminum	304 Stainless Steel	316 Stainless Steel	6063-T6 Aluminum	Fiberglass
P1000	1-5/8"	1-5/8"	12	0.109	◆	◆	◆	◆
P1001	1-5/8"	3-1/4"	12	0.109	◆	◆	◆	◆
P1100	1-5/8"	1-5/8"	14		◆			
P3000	1-5/8"	1-3/8"	12		◆			
P3300	1-5/8"	7/8"	12		◆			◆
P4000	1-5/8"	13/16"	16	0.078	◆		◆	
P5500	1-5/8"	2-7/16"	12	0.109	◆			
P6000	13/16"	13/16"	19	0.040	◆		◆	
P7000	13/16"	13/32"	19	0.040	◆		◆	

Note: Fiberglass is available in Polyester and Vinyl Ester resins

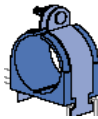
Channel Nuts



1/4", 3/8", 1/2",
5/8", 3/4"

Cush A Clamp®

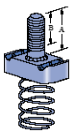
Controlled Squeeze
Pipe Clamp Assembly.
Pipe and
Tubing Sizes



Beam Clamps

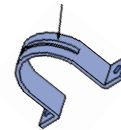
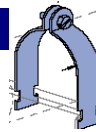
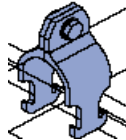


Stud Nut with Spring

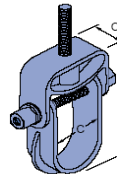


1/4", 3/8", 5/16",
1/2", 5/8"
Std. Lengths
5/8" - 1-3/8"
Custom Available

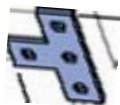
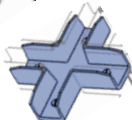
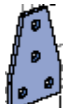
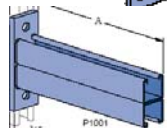
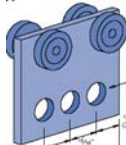
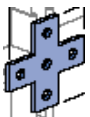
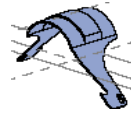
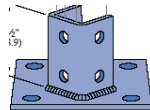
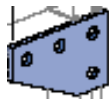
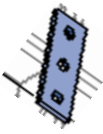
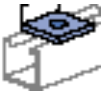
Pipe Clamps



Clevis Hangers

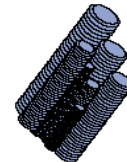


General Fittings



All Thread Rod

1/4", 3/8", 1/2",
5/8", 3/4", 1"



Nuts, Bolts and Washers

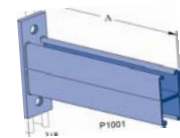
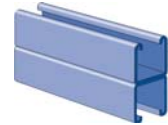
1/4", 3/8", 1/2", 5/8", 3/4", 1"



Contact us for other Special Metal requirements you may have.

Stainless Steel

Channel		Width	Height	Stainless Steel Ga	304 Stainless Steel	316 Stainless Steel
P1000	Single	1-5/8"	1-5/8"	12	◆	◆
P1000T	Slotted	1-5/8"	1-5/8"	12	◆	◆
P1001	Double	1-5/8"	3-1/4"	12	◆	◆
P1100	Single	1-5/8"	1-5/8"	14	◆	
P1100T	Slotted	1-5/8"	1-5/8"	14	◆	
P3000	Single	1-5/8"	1-3/8"	12	◆	
P3200	Single	1-5/8"	1-3/8"	12	◆	
P3300*	Single	1-5/8"	7/8"	12	◆	
P3300T	Slotted	1-5/8"	7/8"	12	◆	
P4000	Single	1-5/8"	13/16"	16	◆	
P5500	Single	1-5/8"	2-7/16"	12	◆	
P6000	Single	13/16"	13/16"	19	◆	
P7000	Single	13/16"	13/32"	19	◆	



Aluminum

Channel	Style	Width	Height	Aluminum 6063-T6
P1000	Single	1-5/8"	1-5/8"	0.109
P1000T	Slotted	1-5/8"	1-5/8"	0.109
P1001	Double	1-5/8"	3-1/4"	0.109
P4000	Single	1-5/8"	13/16"	0.078
P4000T	Slotted	1-5/8"	13/16"	0.078
P5500	Single	1-5/8"	2-7/16"	0.109
P6000	Single	13/16"	13/16"	0.040
P7000	Single	13/16"	13/32"	0.040



Eighteen feet high aluminum platform with stair assembly.

Fiberglass

Channel	Style	Width	Height	Poly-Ester Resin	Vinyl Ester Resin
Heavy Duty Series					
20P2000	Solid	1-5/8"	1-5/8"	◆	◆
20P2200	Slotted	1-5/8"	1-5/8"	◆	◆
20P2100	Double	1-5/8"	3-1/4"	◆	◆
Light Duty Series					
20P1000	Solid	1-5/8"	1-1/8"	◆	
20P1200	Slotted	1-5/8"	1-1/8"	◆	

SST Channel Profile



This profile is similar to standard steel channel.

Standard 1-5/8" steel fittings can be used with this profile.

Stainless steel pipe calmps and channel nuts are generally used with this profile.



Patented Flange Profile



Fiberglass channels with the special patented flange design, provides reliable fastening for fiberglass pipe clamps and accessories.