

Toggle End Fixing



Applications

The toggle anchor method, which uses a restraining plate and end stop, provides an ingeniously fast way of fixing into:

- Profile roof cladding
- Light fittings – (including secondary supports)
- Luminaires – (including secondary supports)
- Other pre-drilled structures

Product Advantages

- Unique anchor method which uses a restraining plate and end stop
- Toggle end fixing is an integral part of the rope, requiring no additional accessories
- Each size is purpose designed to fit a specific hole diameter

Toggle End Fixing Sizes

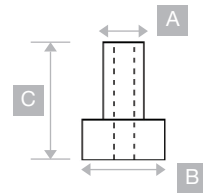
Size	Weight range	ø diameter
No.1	0 – 10kg	6mm
No.2	10 – 45kg	8mm
No.3	45 – 90kg	10mm

- The above sizes have a 5:1 safety factor.
- Available in lengths 1m to 10m as standard – other lengths on request.

example	prefix - size - length
Item order No.	HF-TG - No.2- 1m

End Stop Specification

Sizes	A mm	B mm	C mm
No.1	4.2	5.7	12
No.2	6.2	7.7	12
No.3	6.2	9.7	18



Toggle Specification

Sizes	A mm	B mm
No.1	5.7	40
No.2	7.8	40
No.3	9.6	50



How to Use

