

End Stop Fixing



Applications

The end stop fixing provides a quick and easy method for fixing to:

- Lighting channels and tracks
- Other channel fixings

Product Advantages

- Easy slide-on attachment
- Quick and easy to install

End Stop Fixing Sizes

Size	Weight range
No.1	0 – 10kg
No.2	10 – 45kg
No.3	45 – 90kg

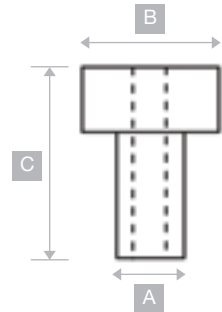
- The above sizes have a 5:1 safety factor.
- Available in lengths 1m to 10m as standard – other lengths on request.

example Item order No.	prefix - size - length
	HF-EG - No.2 - 1m

End Stop Specification

The Gripple end stop is a mild steel, zinc coated end stop, which is pressed onto the wire rope.

Size	A mm	B mm	C mm
No.1	4.2	5.7	12
No.2	6.2	7.7	12
No.3	6.2	9.7	18



How to Use

